

# THE CHANGING FACE OF FARMING

**-OR HOW TO ANNOY YOUR NEIGHBOURS AND MAKE A FORTUNE!**



## A gentleman farmer reveals all .....

When I was a boy farming was very different - FOOD was all-important! Fields were full of corn, crops, grass, cattle with sheep roaming the village (just like today!!) Farm yards had real farming smells, were cluttered with old machinery that still worked and there were many hands to help make the long day pass quickly.



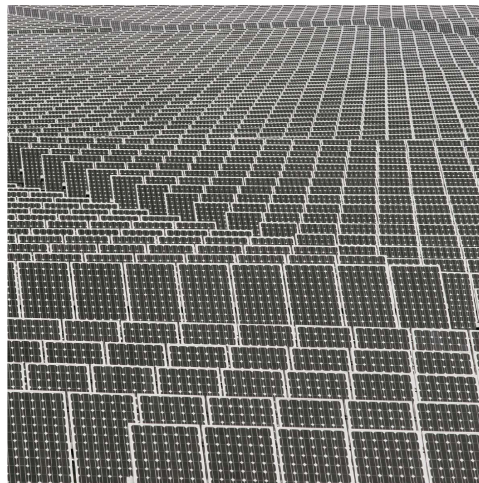
At harvest time the long rows of bundles of corn, ready to be threshed, the smell of cider at lunchtime and the very hot, dusty

days that seemed to go on forever. Life had its pace, and few in the village knew any different. Winters were harsh, but we coped (We knew no different, there was no outside help!)

Tractors and machines were small - not much bigger than some lawnmowers today. Health and safety were called common sense and village life centred around the farms as most villagers were involved in farming in some way or another.

Today things have changed. The two remaining farms in the village are now worked part time and most of the work is done by the farmers themselves. Food production has now taken second place to a mobile shop and horses. Redundant buildings, still with the smell of animals that left long ago, are now awaiting the arrival of new tenants of the two-legged variety!

So what of the future? The fields of corn are quickly turning into fields of glass, as solar energy is the new buzzword in Stocklinch.



Farming is now an expensive hobby for most and even the bigger units find it hard to make a reasonable profit. Communes of tee pees have sprung up in some fields, perhaps the beginnings of Stockfest, the new music festival!! Will we soon see wind turbines on The Lynches or Hackpen, or a nuclear power station on the Isle for those who can't afford green energy.

The future for me, I'm not at all worried! A well-known chain of supermarket has just approached me to buy Manor Farm for a new mega-store development, so foreign climes here I come!!!



**Editor's note:** If you would like to make a donation to The Bugle's Poor Farmer's Benevolent fund or Manor Farm Developments Ltd. put your cash through the letter box at Elwell House.

# CLASSIFIED

**FOR SALE**



One hardly used classic red PO telephone box. Ideal home for small family. Would benefit from double glazing. Any reasonable offers accepted. Telephone Ursula 01460 667543 for full details of this unique offer.

## CLASSIC WHISKY OFFER

Rare multiple malt. GlenMcKinlay whisky for sale at ONLY £99.99 a bottle. All bottles pre-diluted using genuine Stocklinch well water. Available only at the Chantry. Please use the back door and ask for Ian.

